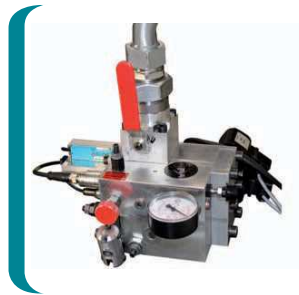
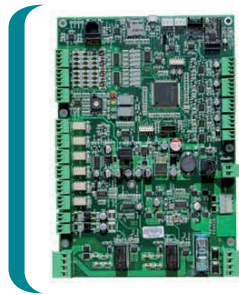




HEVOS HE PUMP UNIT

HYDRAULIC PUMP UNIT WITH ADVANCED E-DRIVE CONTROL SYSTEM

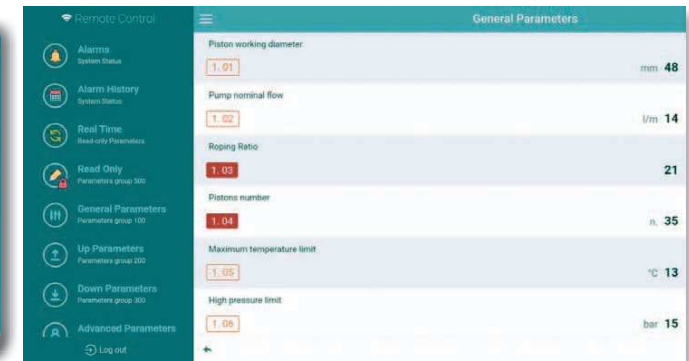
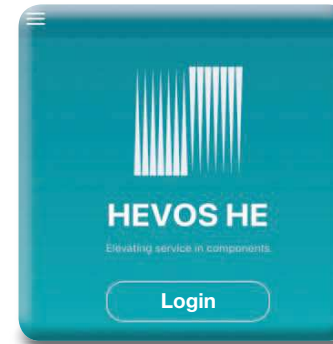
SELF-LEARN MODE



OMARLIFT – HEVOS HE: hydraulic pump unit for passenger lifts with electronic valve.

- Electronic control board with Self-learn mode and Wifi connection
- Control panel interface with CANopen (1 master board + 7 slave max)
- Integrated UCM/A3 device monitoring
- Do not need encoder in the shaft
- Totally programmable by smartphone with:
OMARLIFT HEVOS – HE App  

Self-learn mode: after the activation, the control board recalculates the time and the main valve opening curve allowing the optimization of deceleration distance and stop, independently of the load and temperature conditions.



HEVOS HE E-DRIVE CONTROL SYSTEM

VALVE TYPE	MAX CAPACITY [l/min]	PRESSURE RANGE [bar]
250	30 - 250	10 - 45
650	300 - 600	10 - 45