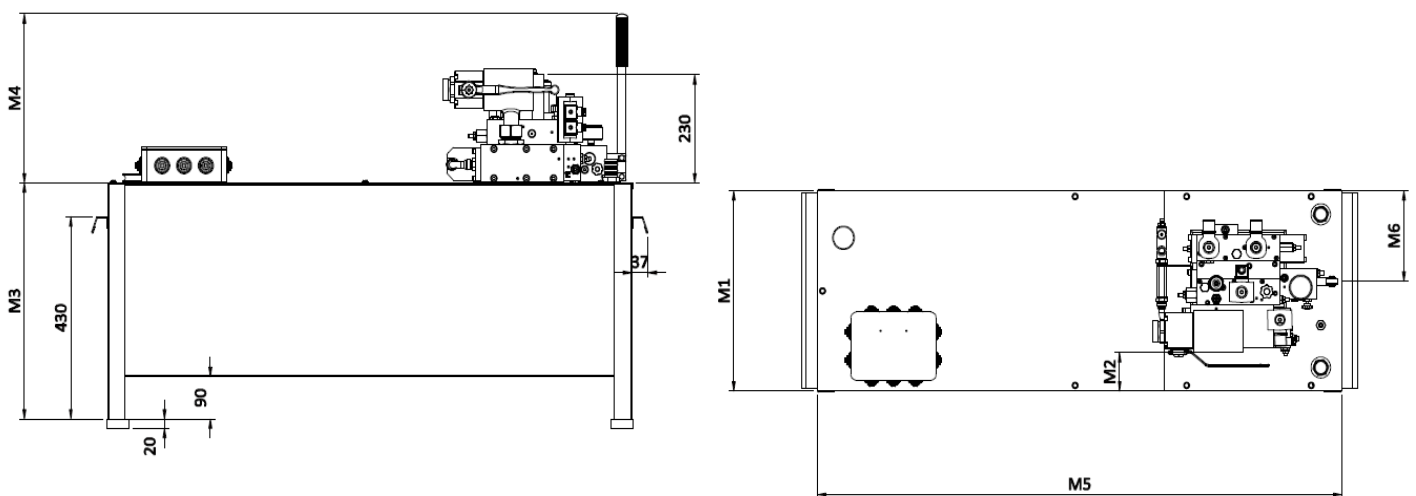


6.15 "BASSOTTO" PUMP UNITS

"Bassotto" pump units are more compact, with reduced height while ensuring a discrete amount of oil, designed for placement at the bottom of the pit in installation room less. They are available in different configurations with HC, HI or NL valve, with or without UCM device.

With NL valve

VALVE TYPE	CAPACITIES LITRES	M1	M3	M4	M5	M6
NL	77	430	500	360	1200	190



HI valve with HDU

VALVE TYPE	CAPACITIES LITRES	M1	M3	M4	M5	M6
HI	77	430	500	360	1200	190

