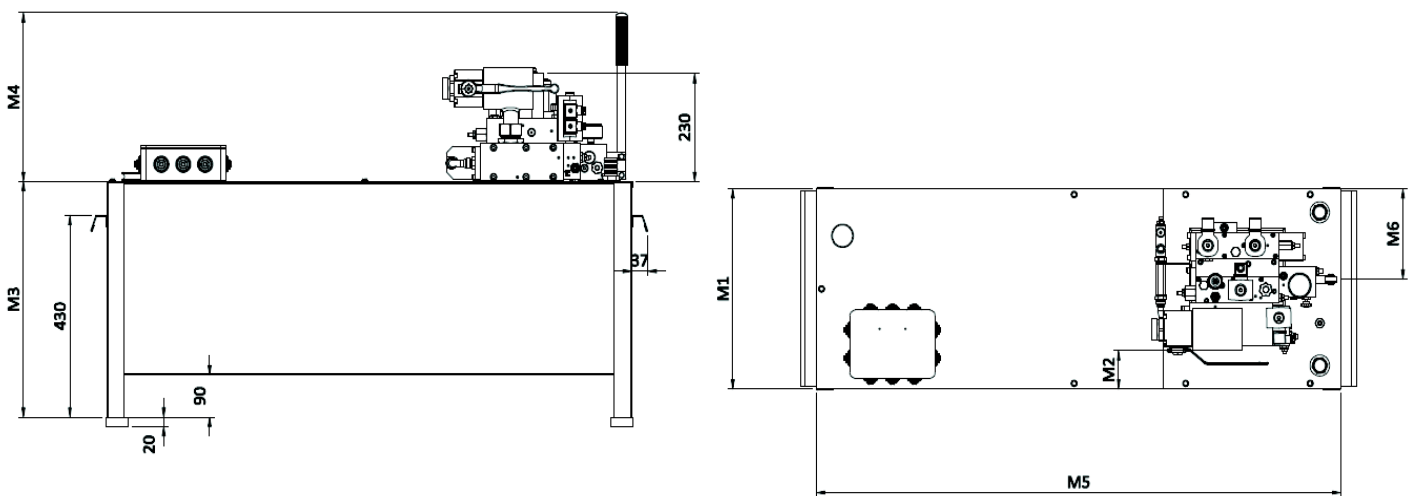


6.15 “BASSOTTO” PUMP UNITS

“Bassotto” pump units are more compact, with reduced height while ensuring a discrete amount of oil, designed for placement at the bottom of the pit in installation room less. They are available in different configurations with HC , HI or NL valve, with or without UCM device.

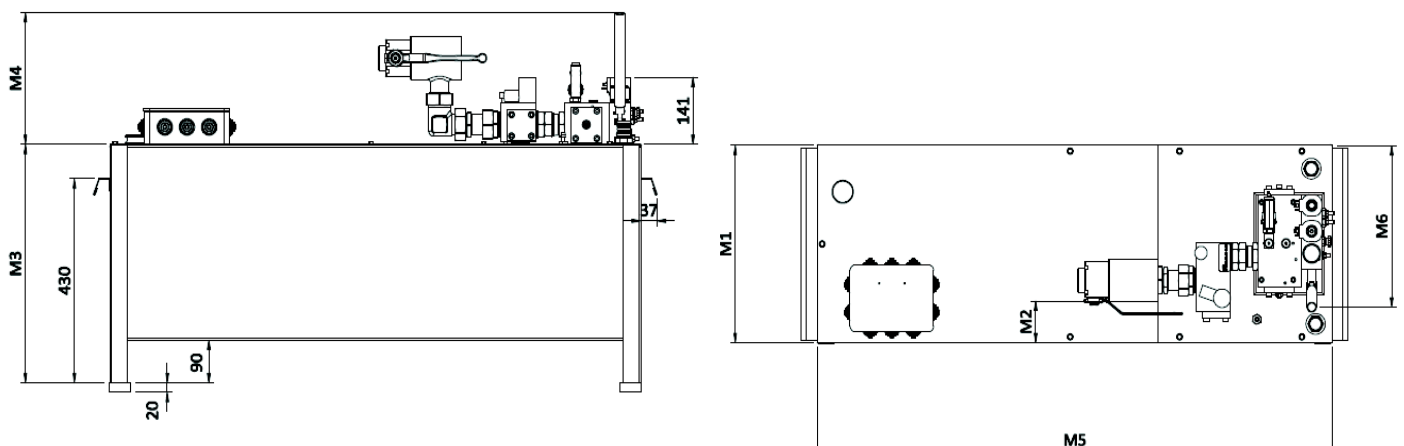
With NL valve

VALVE TYPE	CAPACITIES LITRES	M1	M3	M4	M5	M6
NL	77	430	500	360	1200	190



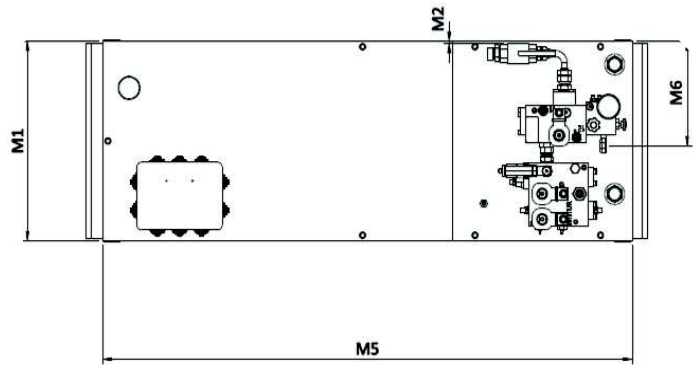
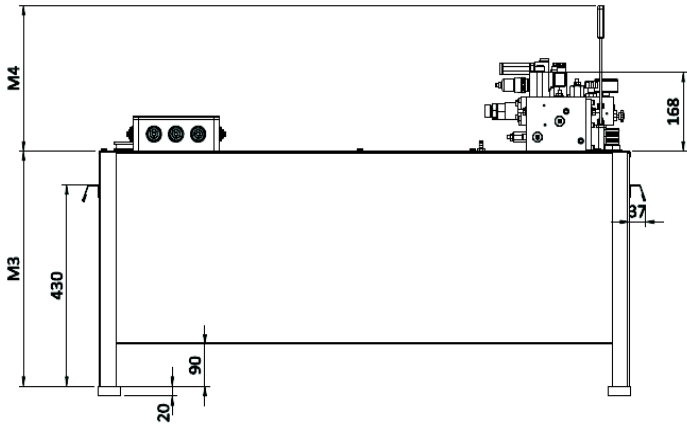
HI valve with HDU

VALVE TYPE	CAPACITIES LITRES	M1	M3	M4	M5	M6
HI	77	430	500	360	1200	190



HC valve with HDU

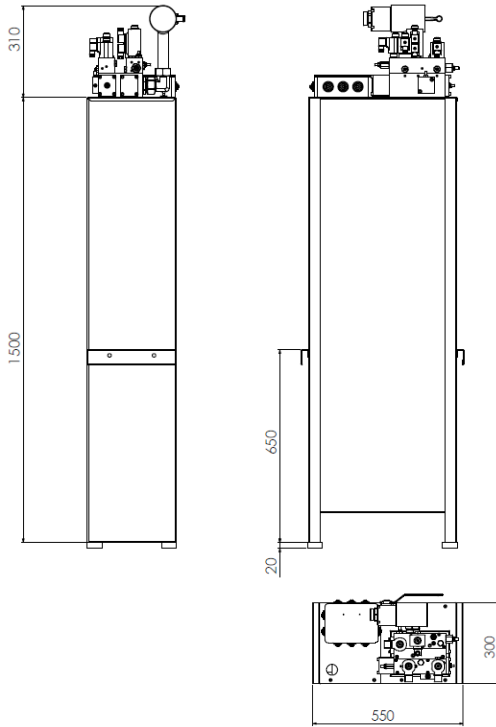
VALVE TYPE	CAPACITIES LITRES	M1	M3	M4	M5	M6
HC	77	430	500	360	1200	190



Centralina MRL-HM MRL-HM Pump Unit

Nuovo sistema MRL-HM senza locale macchina. Compatto con possibilità di installarlo in fossa (tra le guide)
New MRL-HM system machine roomless. Very compact, it is possible to install into the pit (between the guide)

DIMENSIONI E INGOMBRI DELLA CENTRALINA PUMP UNIT DIMENSION

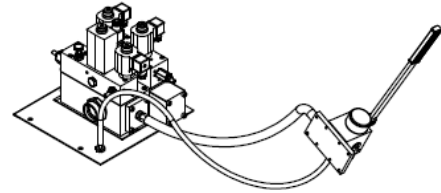


Massima Corsa Stelo – Olio Necessario – Uscita Tubazione Maximum Rod Stroke - Oil necessary - Hose Connection

TIPO SERBATOIO / TANK TYPE		MRL	TIPO SERBATOIO / TANK TYPE
POMPA / PUMP		MAX 210 l/min	POMPA / PUMP
USCITA / OUTLET		1"1/4 1"1/2	USCITA / OUTLET
STELO (mm)	OLIO NECESSARIO OIL NECESSARY	130	Olio per Copertura Motore (l) Oil for Motor Coverage (l)
ROD DIAMETER (mm)	Movimento Movement (l/metro) Riempimento Filling (l/metro)	80	Olio per Movimento (l) Oil for Movement (l)
50	2 3.1	8000	Corsa max STELO (mm) Max ROD Stroke (mm)
60	3 4.5	10000	
70	3.8 5	9000/11000	
80	5 3.8	9000(11000*)/12000	
85	5.7 4.7	7500/13000	
90	6.4 5.7	6500(8500*)/12500	
100	7.8 5.6	6000(7000*)/10000	
110	9.5 6.4	5000(6000*)/8250	
120	11.3 6.1	4500/7000	
130	13.3 8.5	3500/6000	
150	17.7 8.3	3000/4500	

* Cilindro tipo CS - CS Cylinder type

Pompa a mano remotata completa di tubi e raccordi
Hand pump mounted outside the pit, completed of tubes and fittings



SCELTA MOTORE – POMPA 50 HZ MOTOR - PUMP CHOICE 50 HZ

ROD DIAMETER (mm) DIAMETRO STELO (mm)	NL210 - 1 1/4"															NL210 - 1 1/2"					VALVOLA VALVE SIZE															
	55					75					100					125					150					180					210					POMPA (l/min) PUMP (l/min)
	4.5	6.5	8	6.5	8	10.5	6.5	8	10.5	13	8	10.5	13	15	10.5	13	15	17	20	15	17	20	25	15	17	20	25	MOTORE (HP)								
	3.3	4.7	5.8	4.7	5.8	7.7	4.7	5.8	7.7	9.5	5.8	7.7	9.5	11	7.7	9.5	11	12.5	14.7	11	12.5	14.7	18.3	11	12.5	14.7	18.3	MOTORE (kW)								
	25	38	45	27	37	45	19	27	37	45	22	29	36	45	24	31	36	40	45	29	33	38	45	23	27	32	40	Press. Statica Max. (bar) Max. Static Pressure (bar)								
50	0.45			0.61			0.81				0.71			0.85								0.75			0.86			VELOCITA' STELO (m/s) MOTORI 2 poli 2750g/min ROD SPEED (m/s) 2 POLE MOTOR 2750 rpm								
60	0.31			0.43			0.58				0.53			0.62								0.58			0.68											
70	0.23			0.32			0.43				0.41			0.48								0.52			0.61											
80	0.18			0.25			0.32				0.37			0.43								0.46			0.54											
85	0.16			0.22			0.28				0.32			0.38								0.37			0.44											
90	0.14			0.19			0.26				0.26			0.31								0.31			0.36											
100	0.12			0.16			0.21				0.22			0.26								0.26			0.31											
110	0.10			0.13			0.18				0.19			0.22								0.22			0.26											
120	0.08			0.11			0.15				0.16			0.19								0.22			0.26											
130	0.07			0.10			0.13				0.14			0.17								0.22			0.26											
150				0.07			0.10				0.12			0.14								0.17			0.20			50 Hz.								

SCELTA MOTORE – POMPA 60 HZ MOTOR - PUMP CHOICE 60 HZ

ROD DIAMETER (mm) DIAMETRO STELO (mm)	NL210 - 1 1/4"															NL210 - 1 1/2"					VALVOLA VALVE SIZE										
	65					90					120					150					180					215					POMPA (l/min) PUMP (l/min)
	6	8	10.5	6	8	10.5	13	8	10.5	13	15	10.5	13	15	17	20	15	17	20	25	15	17	20	25	15	17	20	25	MOTORE (HP)		
	4.4	5.8	7.7	4.4	5.8	7.7	9.5	5.8	7.7	9.5	11	7.7	9.5	11	12.5	14.7	11	12.5	14.7	18.3	11	12.5	14.7	18.3			MOTORE (kW)				
	25	38	45	19	27	37	45	20	27	36	45	22	28	32	39	45	22	27	35	45	21	30	37	45			Press. Statica Max. (bar) Max. Static Pressure (bar)				
50	0.50			0.70			0.93				0.84											0.74			0.88			VELOCITA' STELO (m/s) MOTORI 2 poli 2750g/min ROD SPEED (m/s) 2 POLE MOTOR 2750 rpm			
60	0.35			0.50			0.68				0.61											0.57			0.68						
70	0.25			0.37			0.50				0.47											0.45			0.54						
80	0.20			0.28			0.37				0.37											0.45			0.54						
85	0.15			0.21			0.30				0.30											0.45			0.54						
90	0.13			0.18			0.24				0.25											0.36			0.43						
100	0.10			0.14			0.20				0.20											0.30			0.36						
110	0.08			0.12			0.17				0.21											0.25			0.30						
120	0.07			0.10			0.14				0.18											0.21			0.25						
130				0.07			0.10				0.13											0.16			0.19				60 Hz.		
150							0.07				0.09											0.11			0.13						